

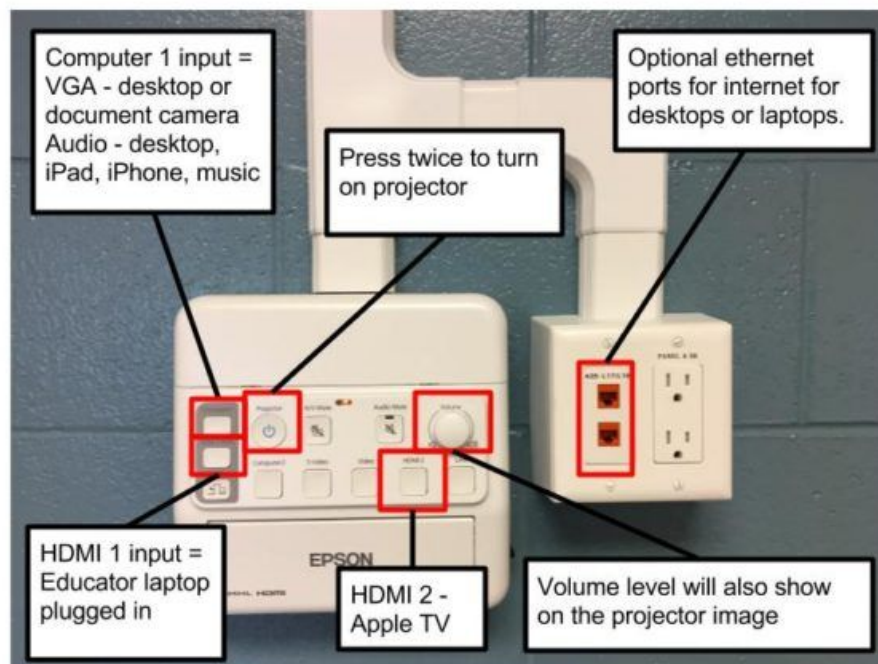
SD61 TEC Package Overview

A "TEC package" is a Technology Enhanced Classroom. There are 3 generations of this package in school district 61. The latest generation 3.0, is the most common with just under half of our classroom equipped with the below package.

The package includes a wall mounted ultra-short thrown projector called the Epson 575W, Epson Active speakers, control box, screen and an Apple TV. You can stream video content wirelessly to the projector via [AirPlay](#) using an iPad or iPhone or from your teacher laptop / desktop using the [Air Parrot tool](#).

The Control Box

The control box for our tech packages offers both, a fully "hard wired" setup that makes for a reliable connection to the projector and speakers and/or a wireless connection via the Apple TV. I have outlined a few points to note for the different connections, VGA or HDMI that can be used for presenting in the classroom. VGA will require a line in (aux.) audio cable if sound is needed, but HDMI is a simple one plug interface that carries both the video and audio in the same plug.



SD61 TEC Package Overview

Cables

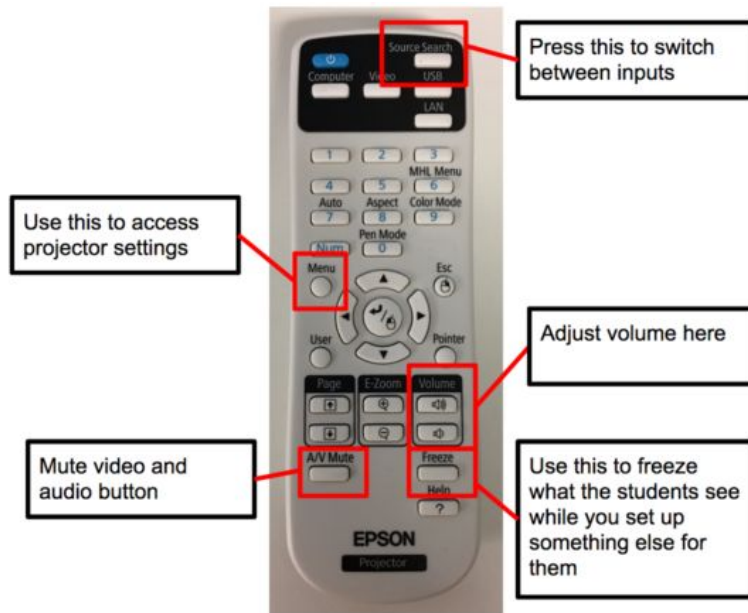


A HDMI cable is provided with your system. Please be aware that it only works in one direction, this means that you can only plug the "source" end of the cable into your laptop. It will carry both video and audio through one cable, so this will be your most common choice when available. VGA cables are larger and will require a separate audio cable that connects to your computer's headphone jack.



The Remote

SD61 TEC Package Overview

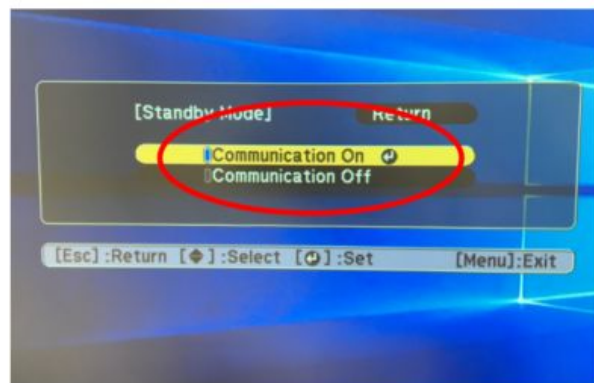
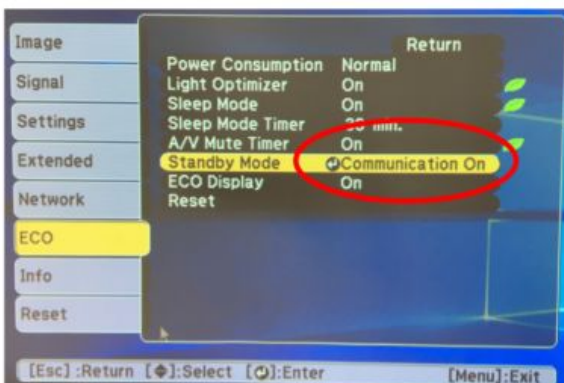


How do I play sound without using my projector?

You are able to play sound from any device either plugged in through either HDMI, headphone jack OR wirelessly via AirPlay on Macs, iPads, or iPhones.

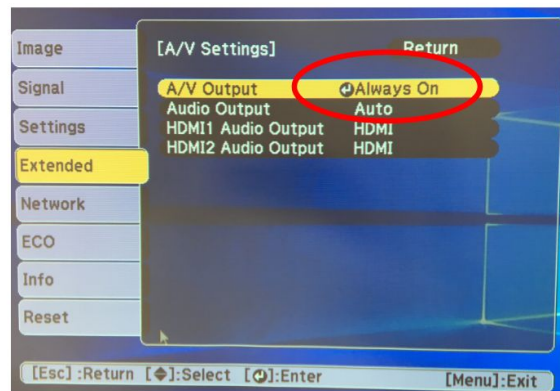
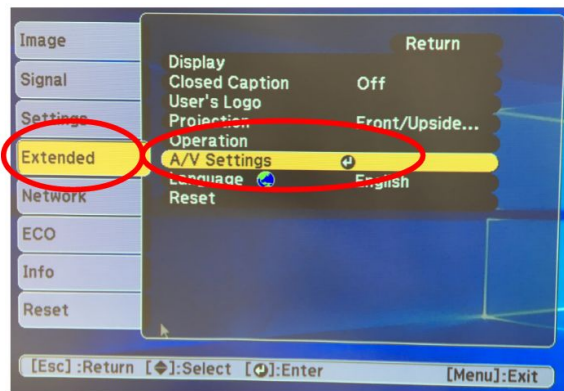
To enable this, you initially need to change two settings on your projector. You will only need to do this once.

1. Press menu on the remote - then select "ECO" - then select "standby mode" - then select "communication on".



1. Go to Extended - then select "AV Settings" - then select "AC Output" - and select "Always On".

SD61 TEC Package Overview



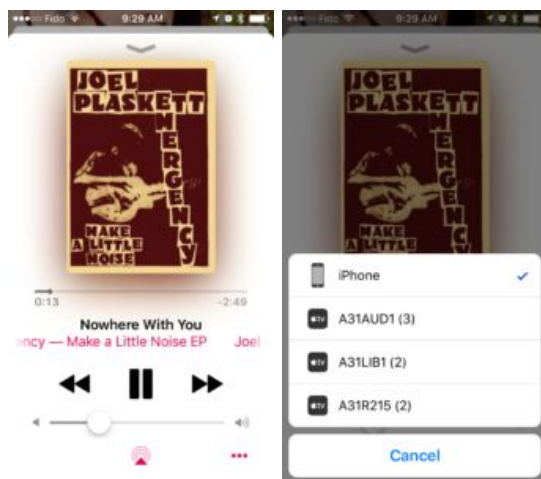
Finally, when wanting to play music, power on the projector, select the input, start the music, then shut off the projector and the music will still play! This will work for your desktop, educator laptop, iPhone, or iPad.

AirPlay Audio from your iPhone or iPad

You can stream audio from your iPhone or iPad easily using AirPlay.

Streaming audio from your music library.

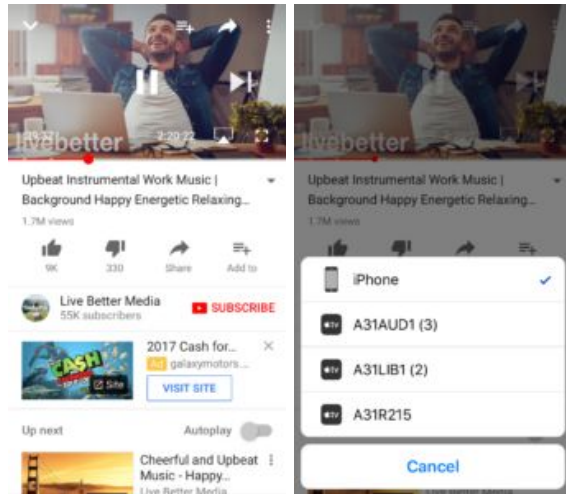
1. Select the upwards pointing arrow icon from under the volume slider.
2. Select the appropriate Apple TV from the list.



Streaming audio from YouTube

1. Select the upwards facing arrow icon, to the left of the "full screen" box.
2. Select the appropriate Apple TV from the list.

SD61 TEC Package Overview



You will find this to be a similar process when using other types of audio apps, i.e. Spotify, etc.